

COMMUNITY NEWSLETTER

Stornoway Port Authority
Deep Water Terminal

March 2023

Issue 08

Deep Water Terminal progress in February



Placement of dredge material in reclamation area completed

Works undertaken in February include:

- Main dredge and placement of material in reclamation area completed
- Compacted reclaimed material
- Continued rock blasting: 49,000 tonnes blasted in February
- Installed a further 22 tubular and sheet piles to form the quay walls

Engineering experience

Some of the site team went back to school in January and February when they gave a second group of Nicolson Institute S2 pupils an introduction to the exciting world of civil engineering.

We hope that this will prompt some of them to consider a career in construction when the time comes.



Students get an intro to civil engineering



FOLLOW US ON TWITTER
@OFFICIAL_MCLH

For more information about the project, or to discuss any concerns, please contact Project Manager, Chris Penman, on mclh.5445@mclh.co.uk



FOLLOW US ON LINKEDIN
@MCLAUGHLIN & HARVEY LTD



Quay walls before installation of tie rods

Next stage of quay wall construction commences

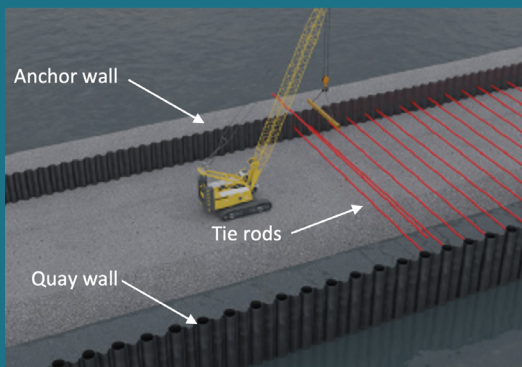


Diagram showing the quay wall, anchor wall and tie rods



Diagram showing the tie rods being covered with rock

Once the tie rods have been installed, the area behind the quay walls will be filled in with rock. This will bring the space behind the quay walls up to the same level as the rest of the reclamation area.

This work will start in March and will take around 12 weeks.

Once all the quay wall piles are in place, a wall of shorter piles will be installed approximately 35m back from the quay walls. This is known as the anchor wall.

Steel tie rods will be fitted between the anchor wall and the quay wall to provide support to the quay wall piles.

Once in place, the tie rods will be tensioned.

The tie rods are fitted with a specialist system which allows the tension to be adjusted to provide the required support for the piles.

Access road



Access road as of end February

Excavation of the new access road leading to the Deep Water Terminal will be completed in March. The next stage will involve the creation of ducting and services along the sides of the road.

Month ahead

Work to be carried out in March includes:

- Complete installation of quay wall piles
- Place fill material behind quay walls
- Start to install tie rods to support the quay wall



FOLLOW US ON TWITTER
@OFFICIAL_MCLH

For more information about the project, or to discuss any concerns, please contact Project Manager, Chris Penman, on mclh.5445@mclh.co.uk



FOLLOW US ON LINKEDIN
@MCLAUGHLIN & HARVEY LTD