

COMMUNITY NEWSLETTER

Stornoway Port Authority
Deep Water Terminal

August 2023

Issue 13



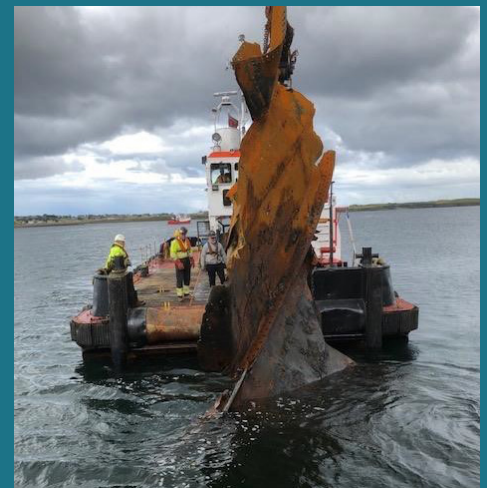
Aerial view of works as
of 4th August 2023

DWT progress through July

Works undertaken in July:

- Installed 20 tie rods and 26m of anchor walls to support the quay walls
- Drilled holes for steel toe pins to anchor piles located on rock
- Last major rock blast carried out
- Continued placing blasted rock behind the quay walls, now 50% complete
- Continued placing crushing rock over the terminal surface area, now one third complete
- Started work on electrical switchroom
- Continued with removal of the Portugal wreck

Removal of the Portugal wreckage



The long reach excavator mounted on a barge has broken up the remains of the vessel. An underwater camera is used to guide this work.

The above photo show pieces of the steel plating which formed the hull, the outer body of the ship, being removed from the sea and lifted onto the barge.



Steel cage placed in one of the main quay wall piles

Completion of the quay walls

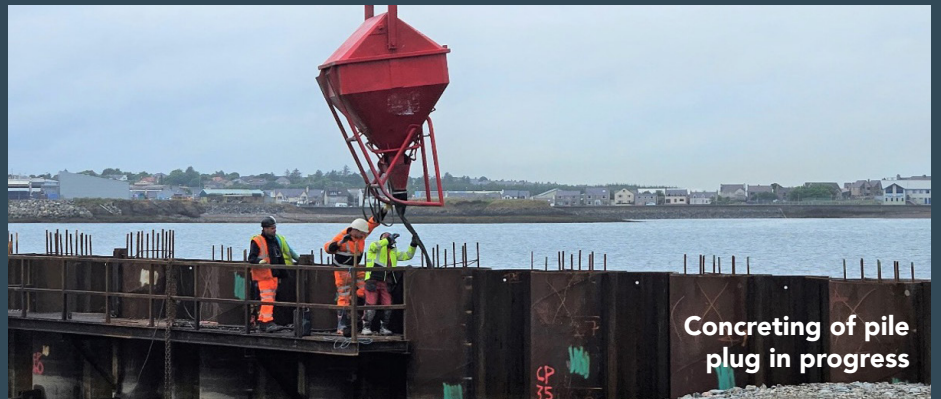
Now that the tie rods for the main quay walls are all in place, the final stage of the quay wall construction is underway.

The first task is to fill the piles with sand to 1m below the level of the tie rods.

Next, a 4.5m long 'cage' of steel reinforcing bars is then lowered into the piles. Concrete is then poured around the cage, finishing 1.5m below the top of the pile.

This forms a plug to the top of the pile, keeping it rigid.

The next stage will involve placing L-shaped pre-cast concrete beams over the top of the piles. These are known as capping beams.



Concreting of pile plug in progress



Concrete capping beams ready for installing on top of the quay wall piles

Works to be carried out during August

Work to be carried out in August includes:

- Install electricity sub-station
- Complete installation of tie rods to support quay piles
- Install steel pins and concrete to tie base of linkspan quay piles into seabed rock
- Start to install concrete capping beams to top of quay wall piles
- Complete removal of the Portugal wreck