

COMMUNITY NEWSLETTER

Stornoway Port Authority
Deep Water Terminal

November 2023

Issue 16



Aerial view of works as
of 27th October

Work through October

- Completed installation of capping beams along main quay wall
- Continued installation of tie rods to linkspan quay piles
- Continued to infill area behind linkspan quay wall with crushed rock
- Reduced seabed level alongside linkspan quay
- Installed steel support for concrete deck to berthing dolphin
- Continued construction of path to Castle Grounds
- Started making bridges for path to Castle Grounds

Electrical supply put in place



The electrical services kiosk and main switchboard was installed in October.

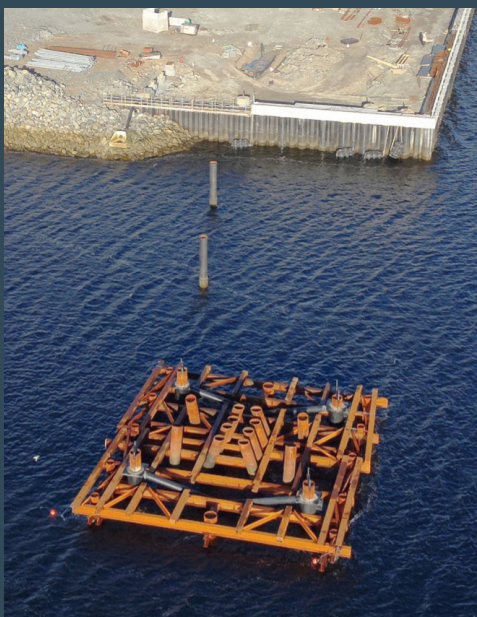
SSEN has run cables from its electrical sub-station to the kiosk and the electricity meter has now been fitted.

This means that the power will be live in plenty of time for completion of the electrical works.



Computer image of completed berthing dolphin

Berthing dolphin



A berthing dolphin is being constructed to the south of the main quay, to allow long vessels to berth.

The steelwork to support the deck is now in place.

The contractor is assembling the formwork (mould) which will contain the concrete during the installation process.

Work ongoing

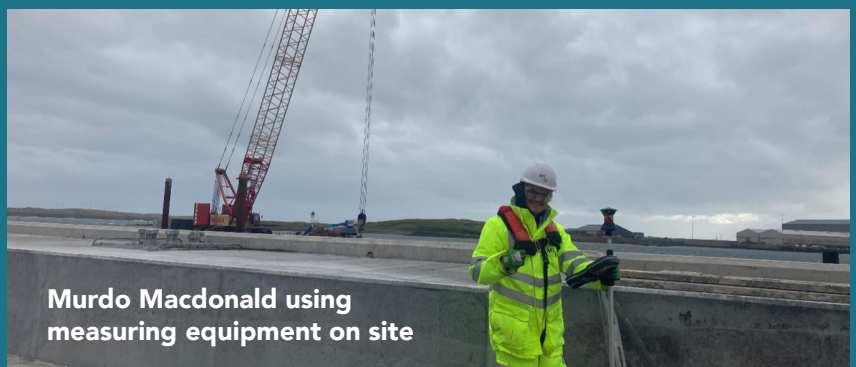
- Installation of concrete capping beams onto quay wall piles
- Complete installation of tie rods to linkspan quay piles
- Complete infill of crushed rock behind linkspan quay wall
- Start concrete surfacing of area at junction between quay walls
- Start installation of fenders and mooring bollards to main quay
- Pour first layer of concrete to form deck for berthing dolphin
- Install bridges along path to Castle Grounds

Work experience for Nicolson pupil

Sixth year pupil Murdo Macdonald did a one week work experience placement at the Deep Water Terminal site in October.

Murdo will be leaving school next year to study Civil Engineering.

He enjoyed his time on site so much that he is coming back for another week in January.



Murdo Macdonald using measuring equipment on site