



# COMMUNITY NEWSLETTER



Aerial view of the works at the end of July

## Works undertaken in July

- Blasted 93,000 tonnes of rock
- Deposited rock in the sea to form access platforms for construction equipment
- Started the removal of the SS Portugal shipwreck, and lowered high points on the SS Alabama shipwreck

## Local companies new to the project this month

- Angus MacIver
- Cleansquad
- Hebrides Alpha
- Macmillan Engineering
- Stornoway Shipping

## Vessel safety



Please help us to keep you safe by staying well clear of the works, as requested by the Port Authority Notice to Mariners 05-2008.

This applies to all vessels including small boats, yachts, jet skis, kayaks and paddle boards.

## KEEP SAFE!



Please do not enter the construction site at any time. We will share photos regularly so that everyone can see progress while staying safe.



FOLLOW US ON TWITTER  
[@OFFICIAL\\_MCLH](#)



FOLLOW US ON LINKEDIN  
[@MCLAUGHLIN & HARVEY LTD](#)

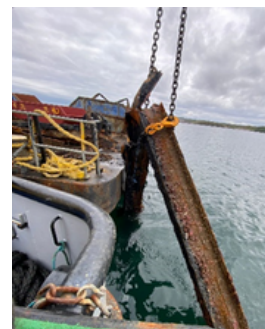
## WORKS PLANNED FOR AUGUST

## Works planned for August

- Rock blasting along route of new access road
- Depositing rock in the sea to form access platforms for construction equipment
- Deliveries of steel for quay walls (directly to Arnish Pier)



Formation of access platforms for construction equipment will continue in August.



Remains of the wreck Portugal



MV Fri Lake will be delivering the quay wall materials.



There are now two rigs on-site drilling for rock blasts.

## Impacts on Arnish Road

Rock blasts will be taking place once or twice a week during August. The blasts are getting closer to Arnish Road, so there will be road closures of approximately 20 minutes duration during the blasts this month.

The construction compound at Arnish Yard is now fully operational.

## Removal of SS Portugal wreck

The Portugal was built in 1899 and sank in the early 1950's. The photos (left) show some of the remains of the vessel removed so far. Removal works will continue during August.